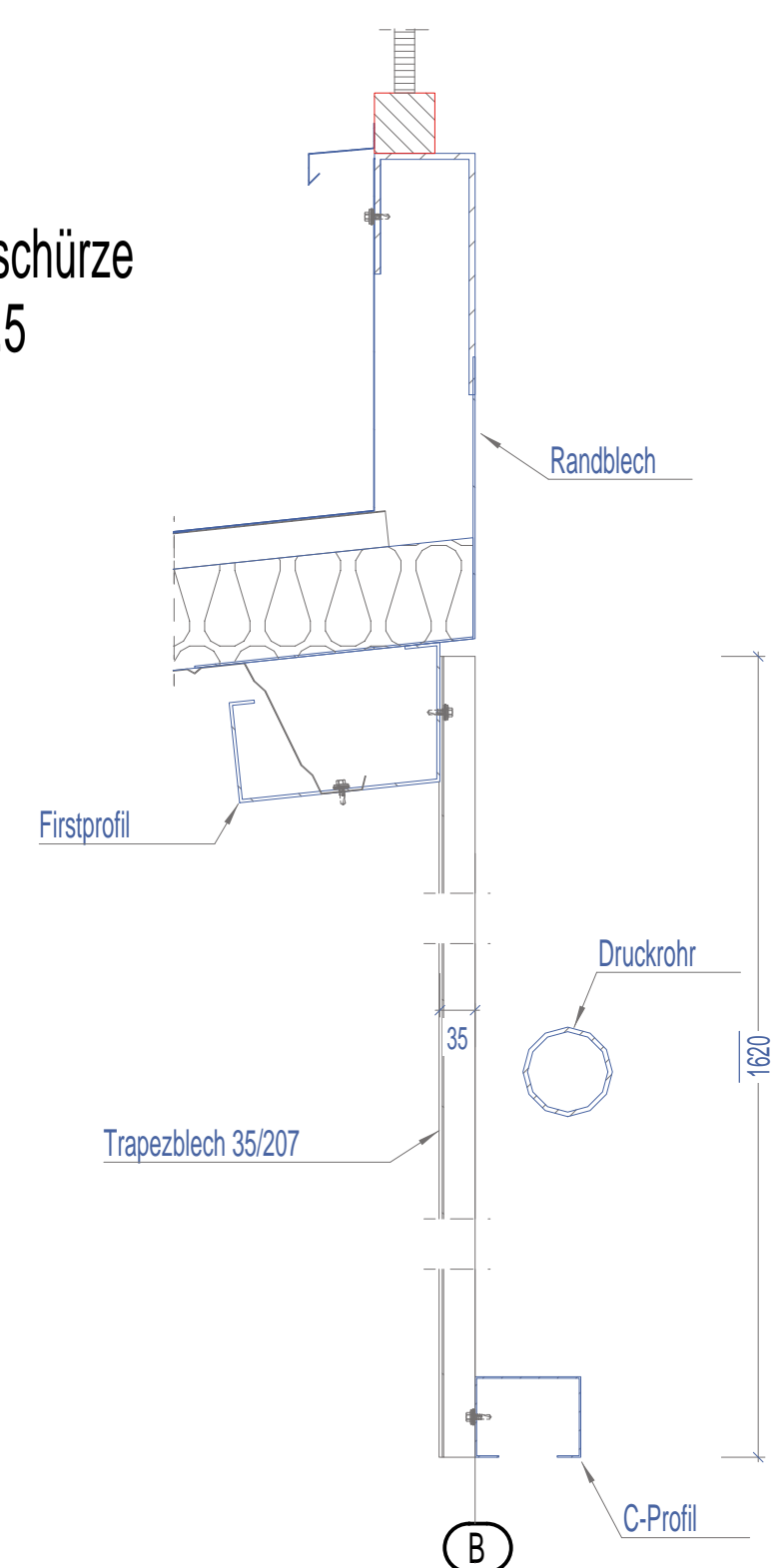
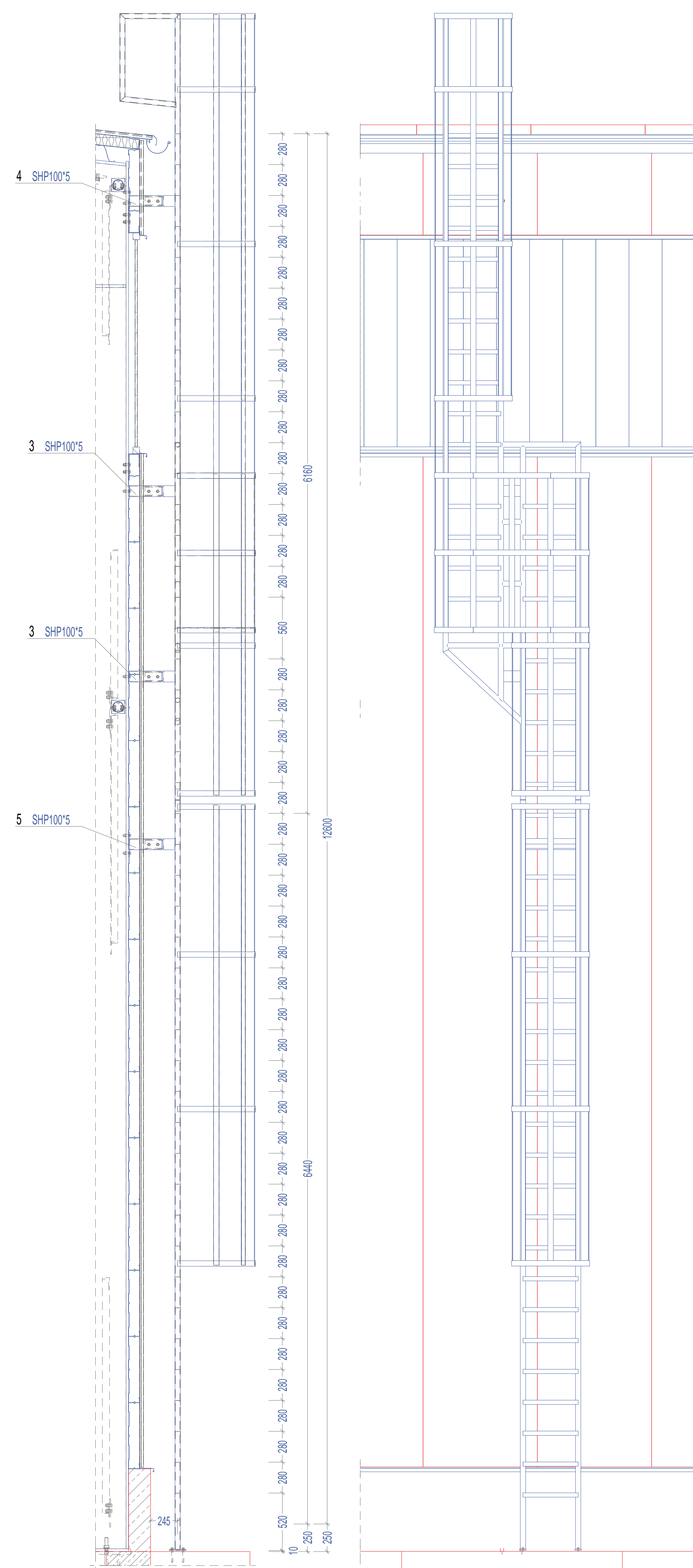


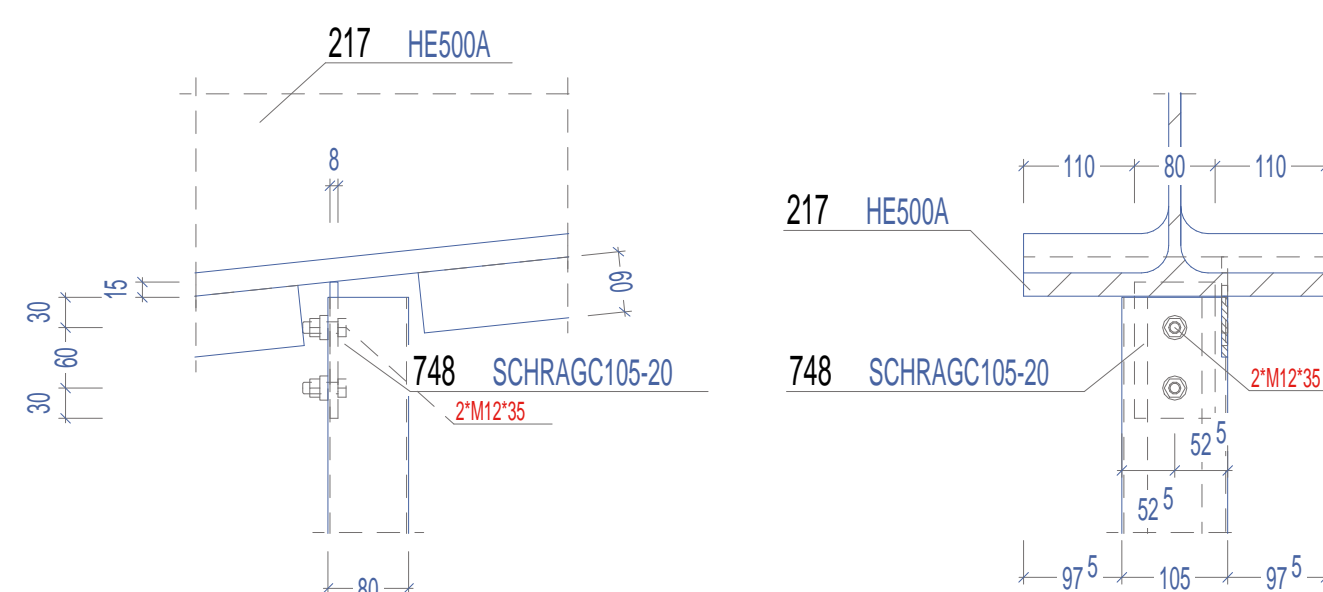
DETAIL Rauchschürze
in Achse B, 1:7.5



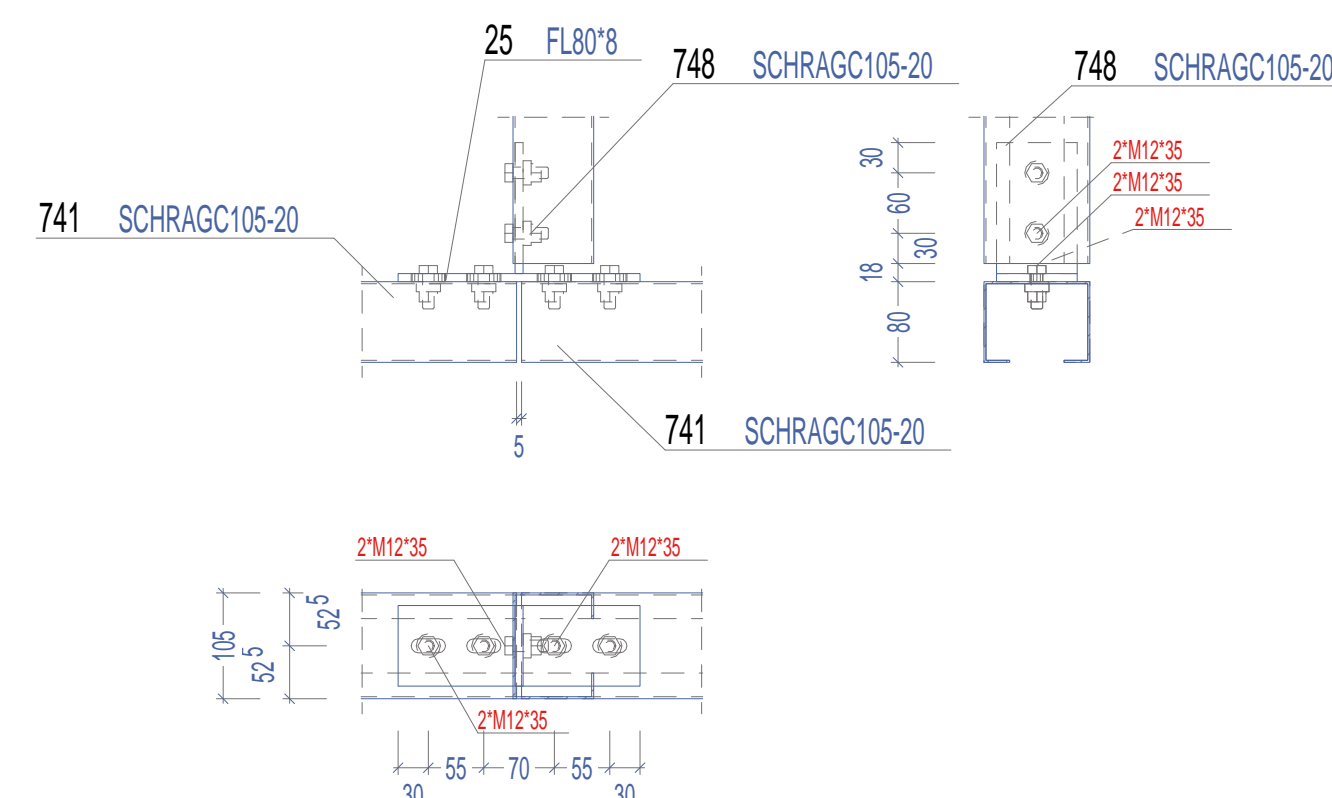
Montage Steigleiter in Achse D, 1:25



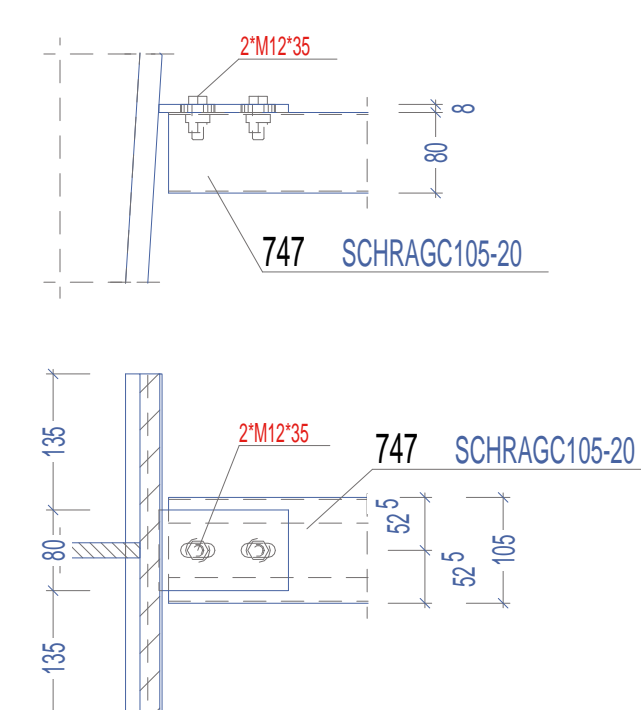
DETAIL 30, 1:7.5



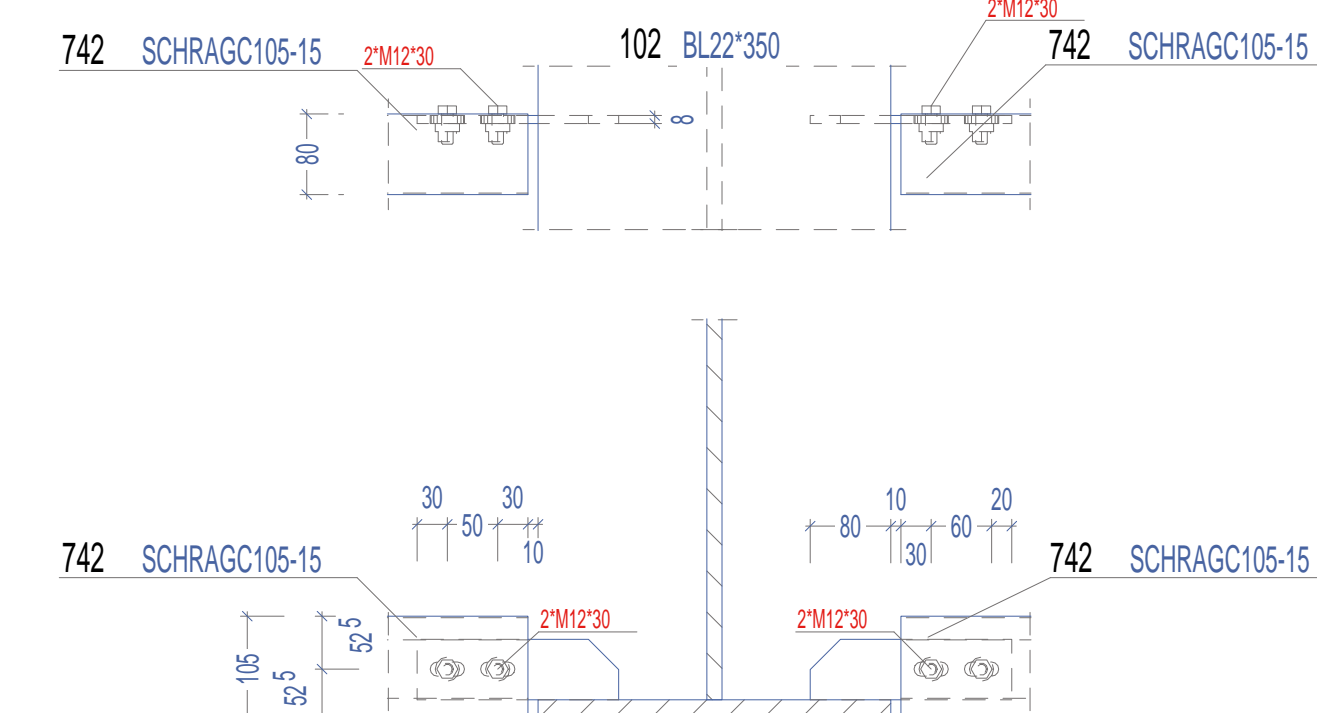
DETAIL 31, 1:7.5



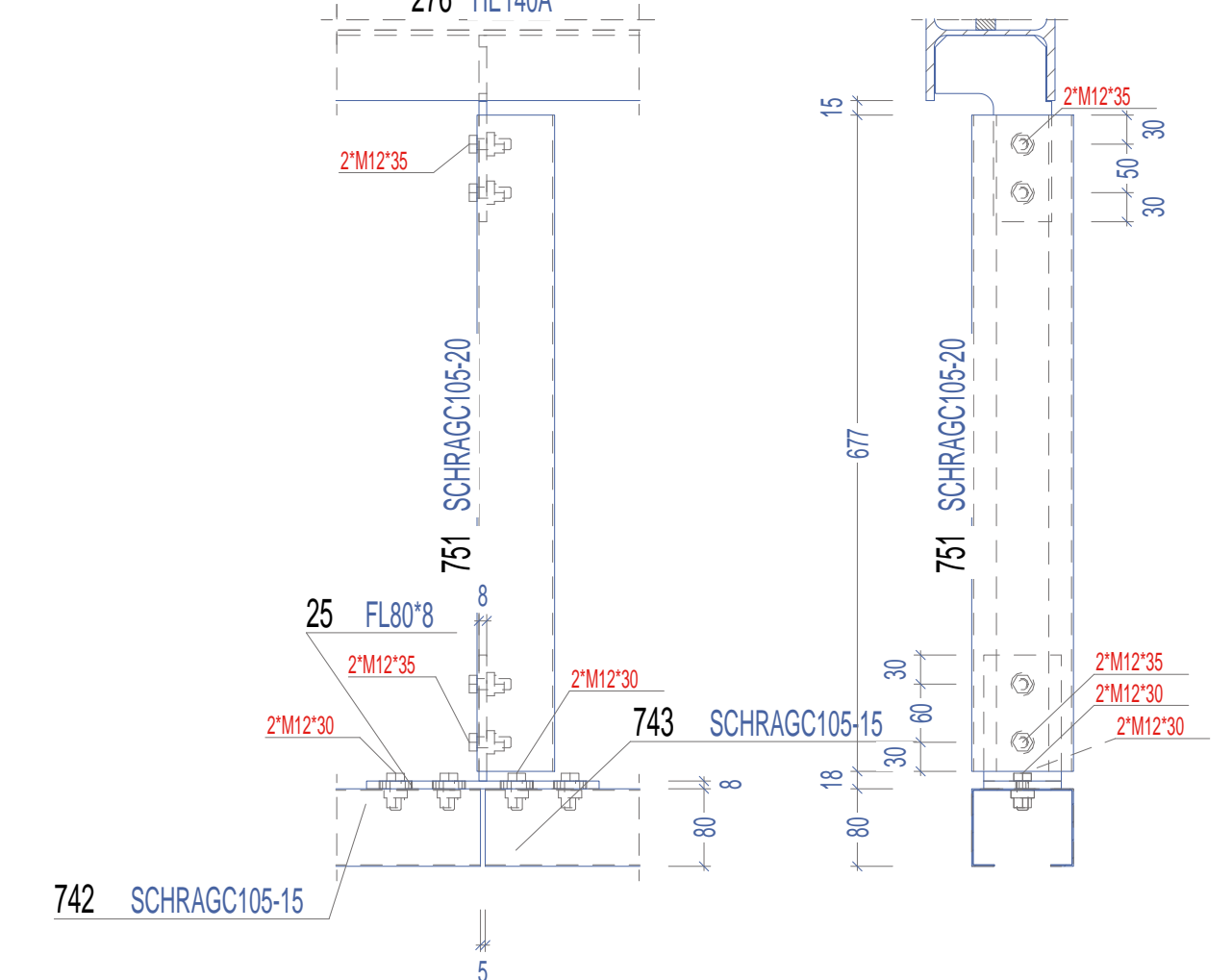
DETAIL 32, 1:7.5



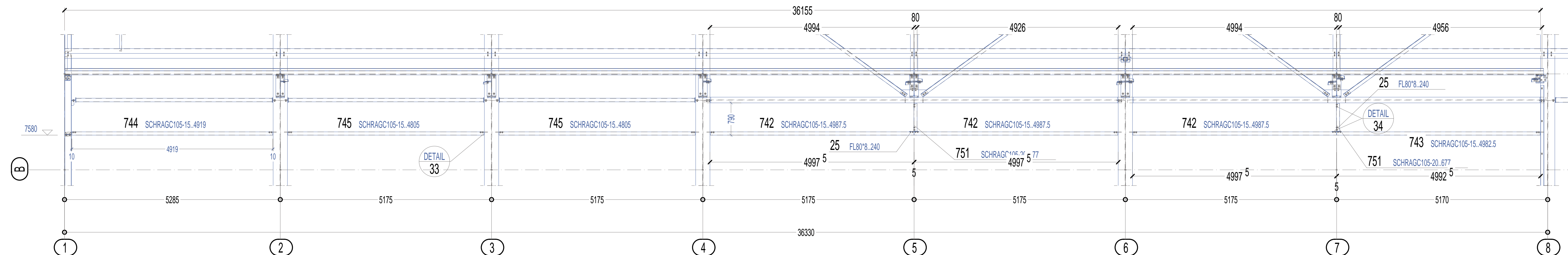
DETAIL 33, 1:7.5



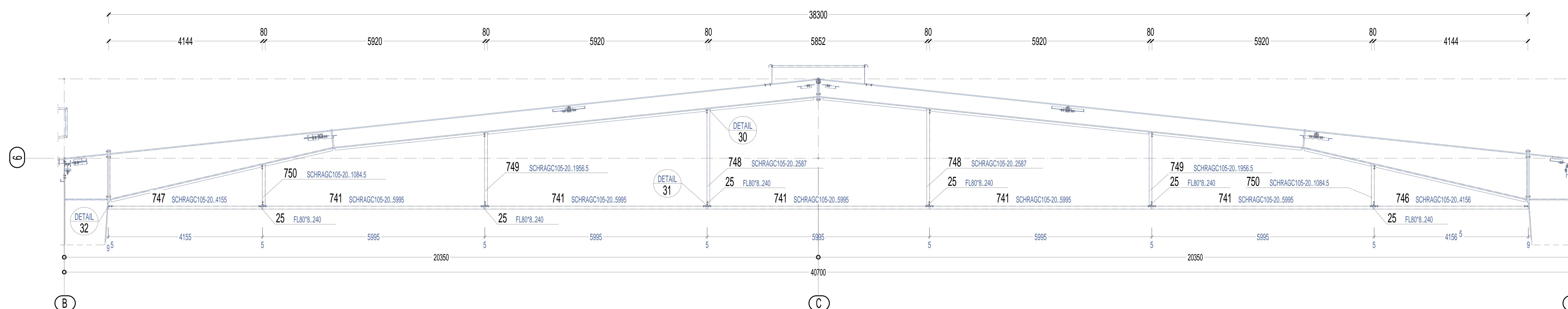
DETAIL 32, 1:7.5



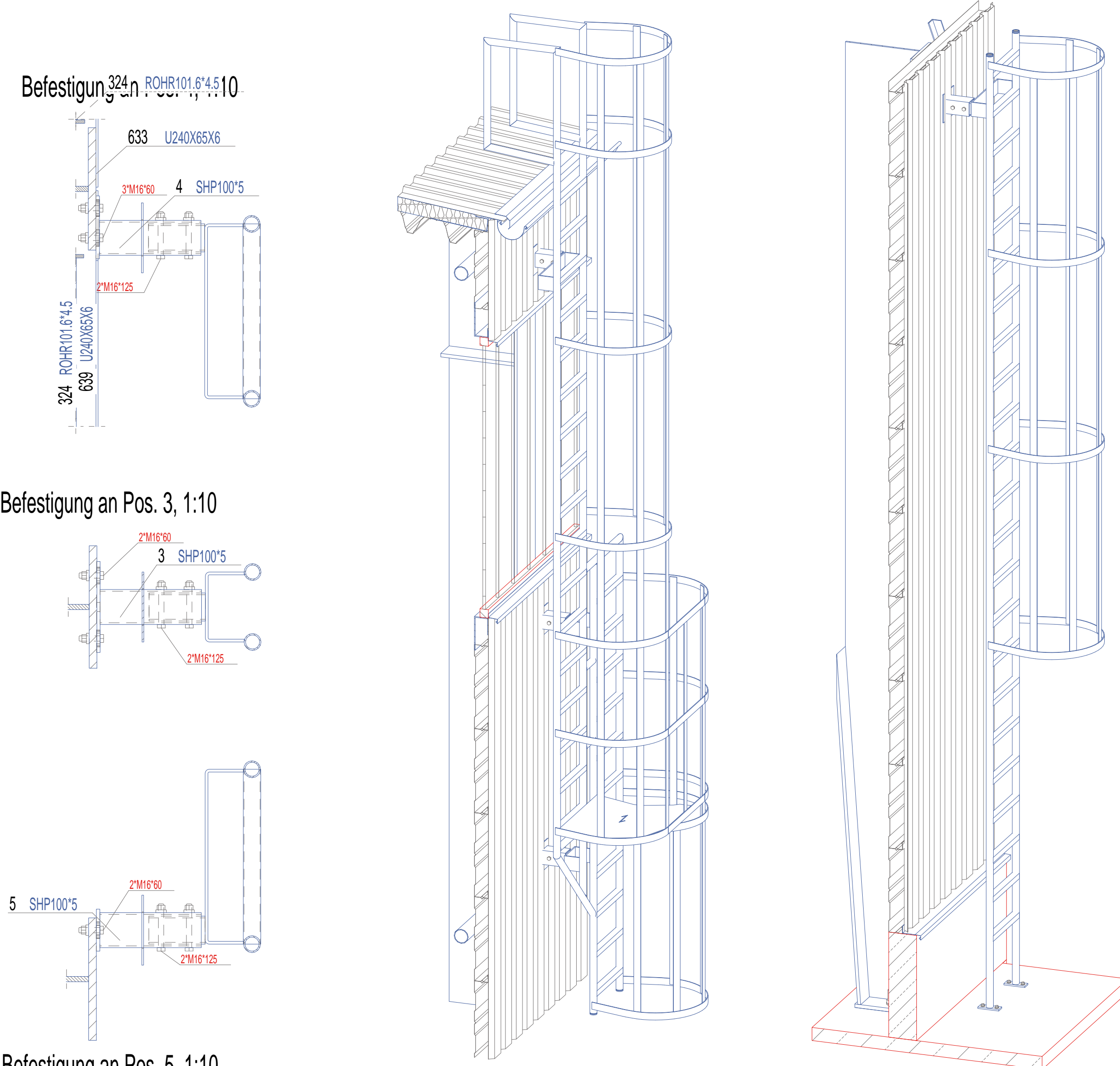
MONTAGE: Rauchschrurze in Achse B, 1:50



MONTAGE: Rauchschürze in Reihe 6, 1:50



Montage Steigleiter in Achse D, 1:25



Montage Steigleiter in Achse B, 1:25

